

Figure 7-41

Bearing. Draw necessary views, with full section (Layout A-3).*

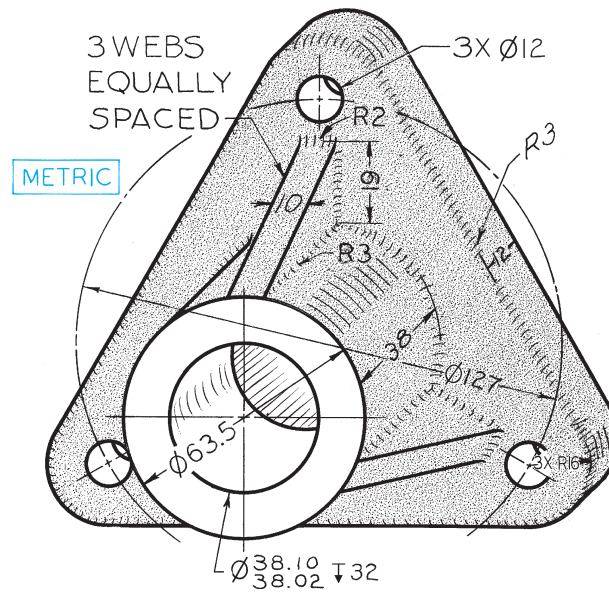


Figure 7-43

Column Support. Draw necessary views, with full section (Layout A-3).*

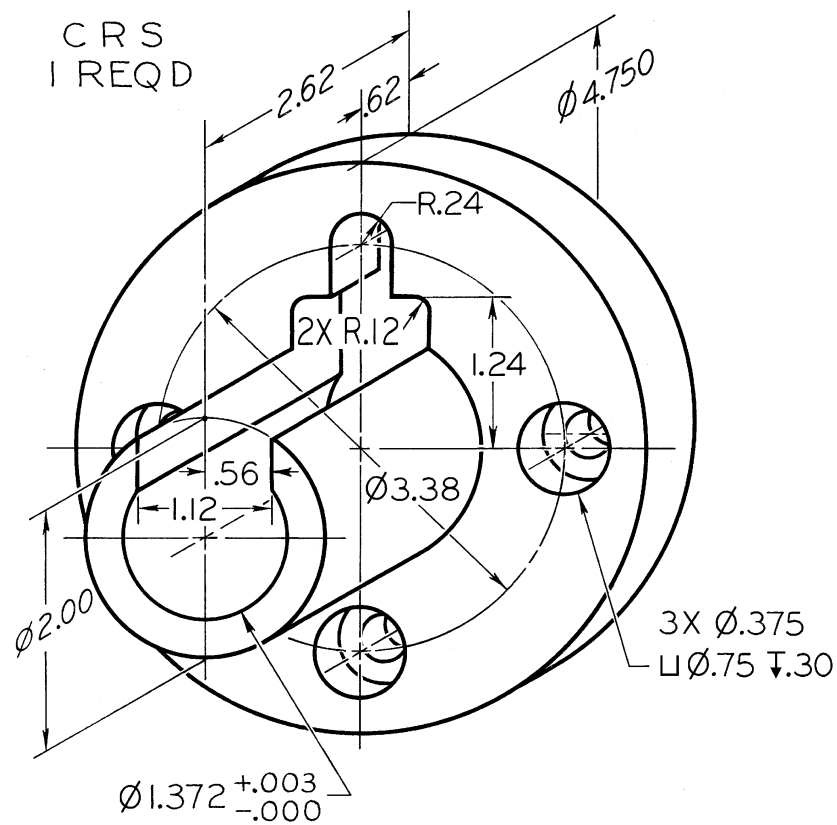


Figure 7-44

Centering Bushing. Draw necessary views, with full section (Layout A-3).*

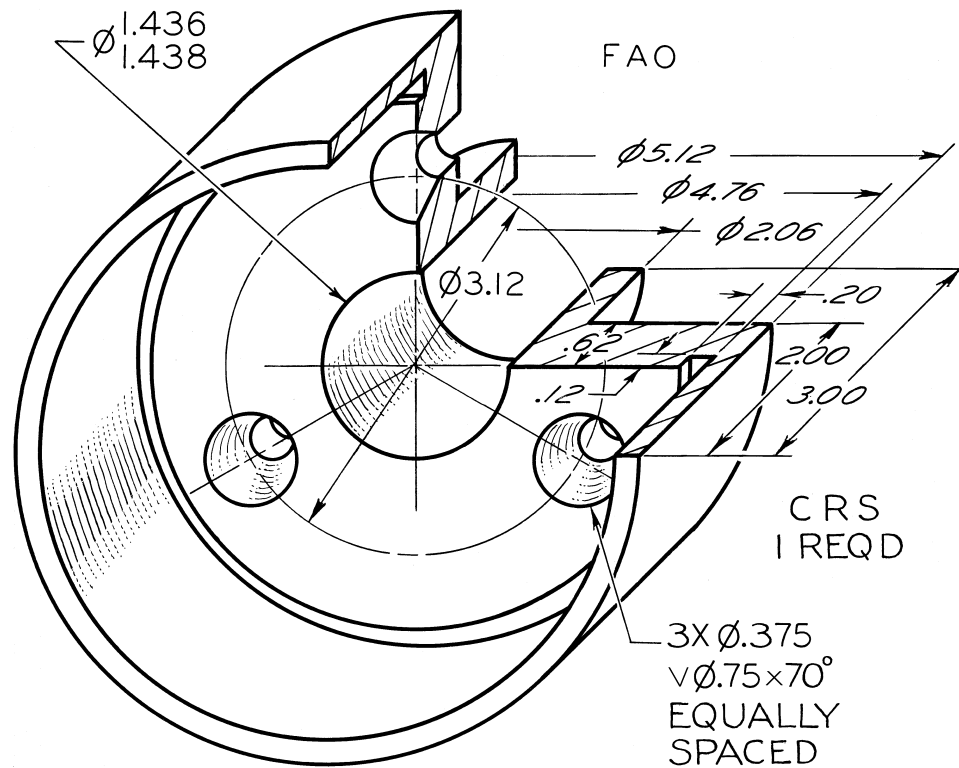


Figure 7-45

Special Bearing. Draw necessary views, with full section (Layout A-3).*

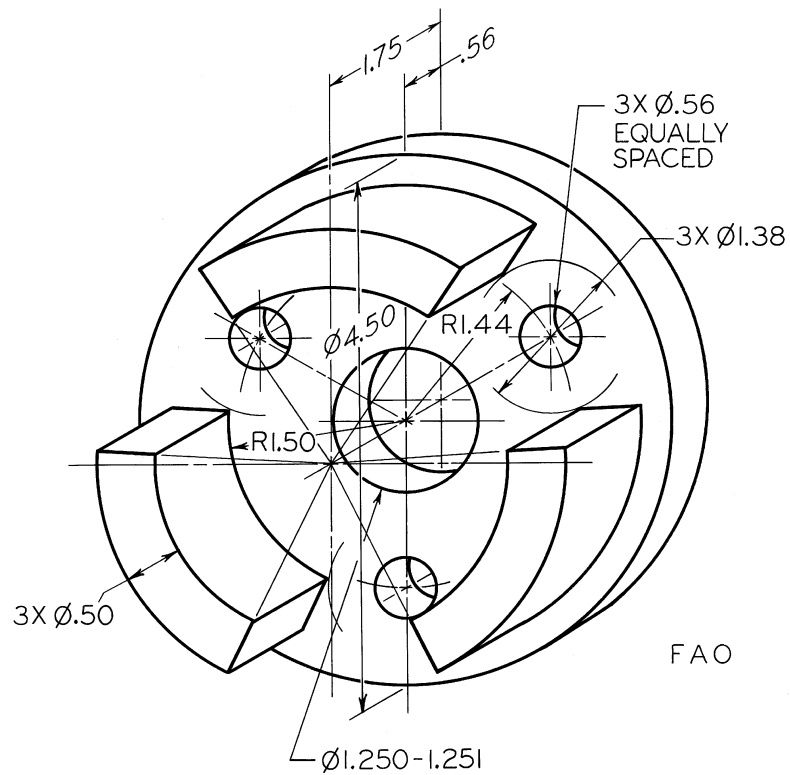


Figure 7-47

Cup Washer. Draw necessary views, with full section (Layout A-3 or A4-3 adjusted).*

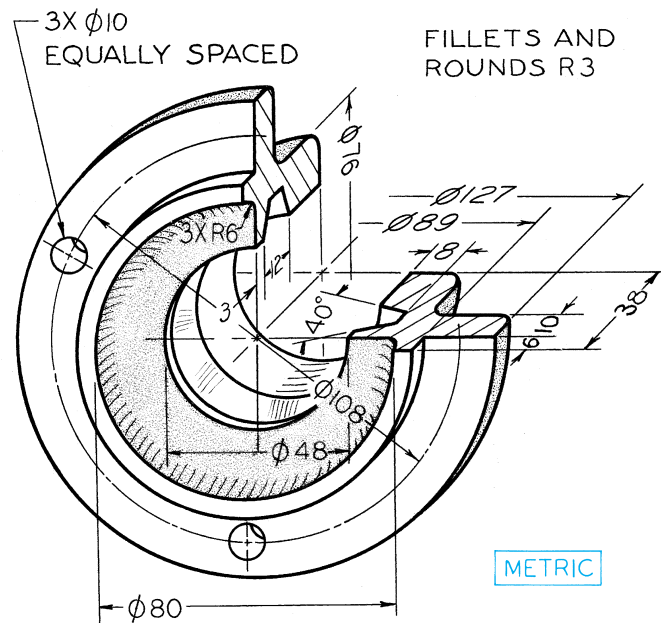


Figure 7-48

Fixed Bearing Cup. Draw necessary views, with full section (Layout A-3 or A4-3 adjusted).*

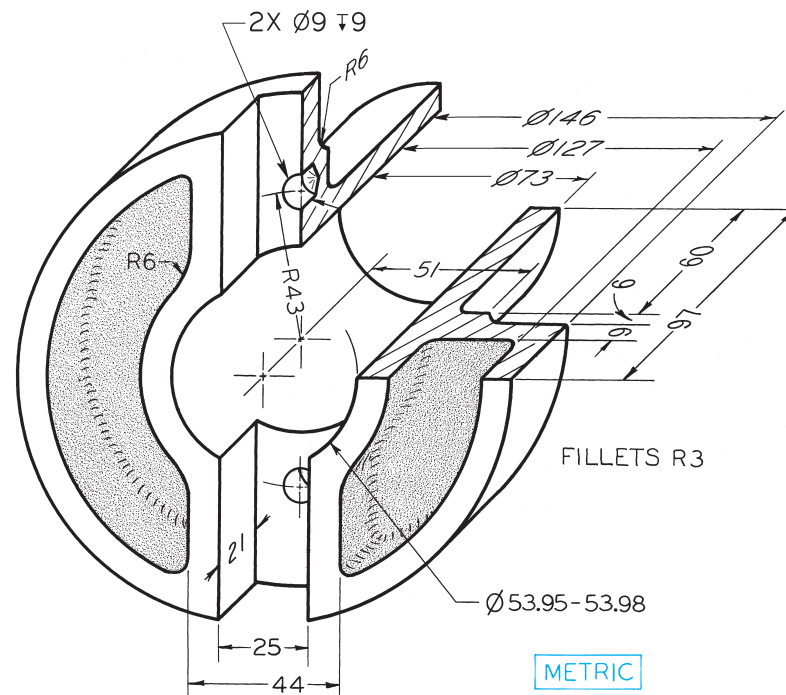


Figure 7-49

Stock Guide. Draw necessary views, with half section (Layout B-4 or A3-4 adjusted).*

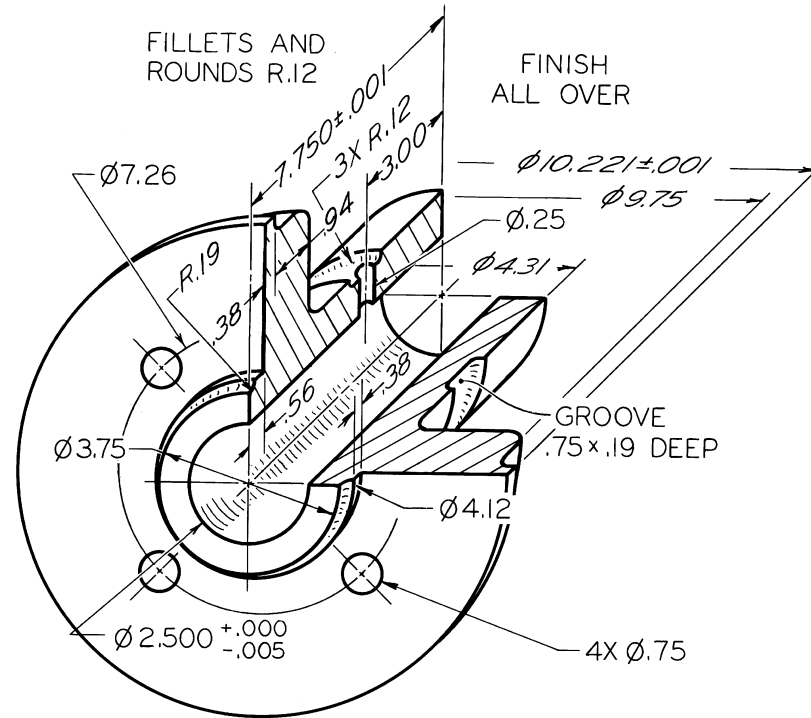


Figure 7-50

Bearing. Draw necessary views, with half section.
Scale: half size (Layout B-4 or A3-4 adjusted).*

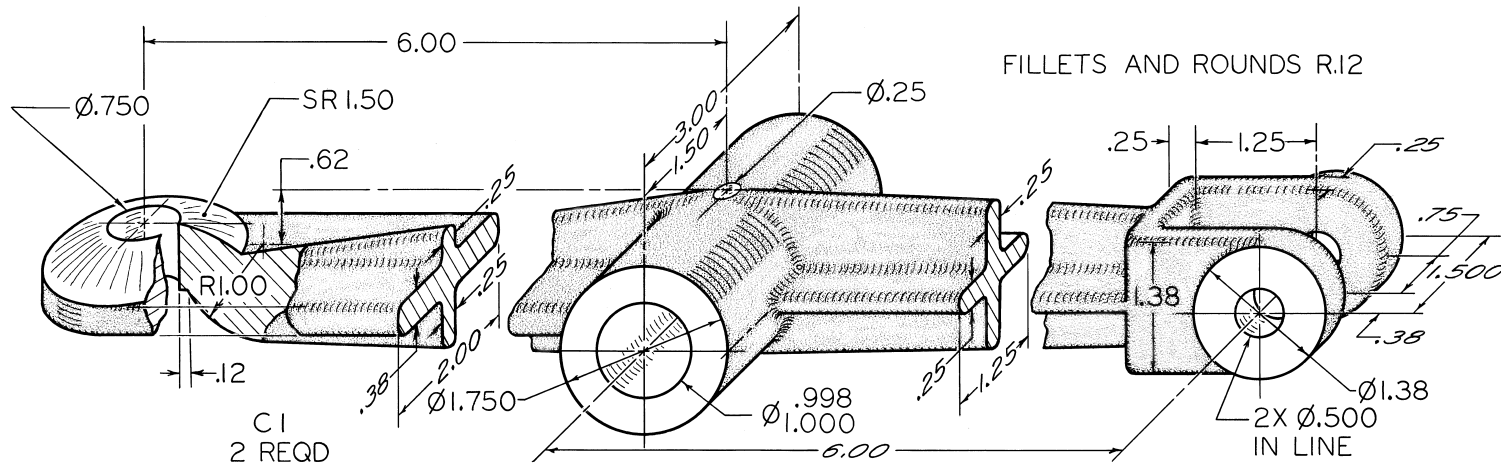


Figure 7-55

Rocker Arm. Draw necessary views, with revolved sections (Layout B-4).*

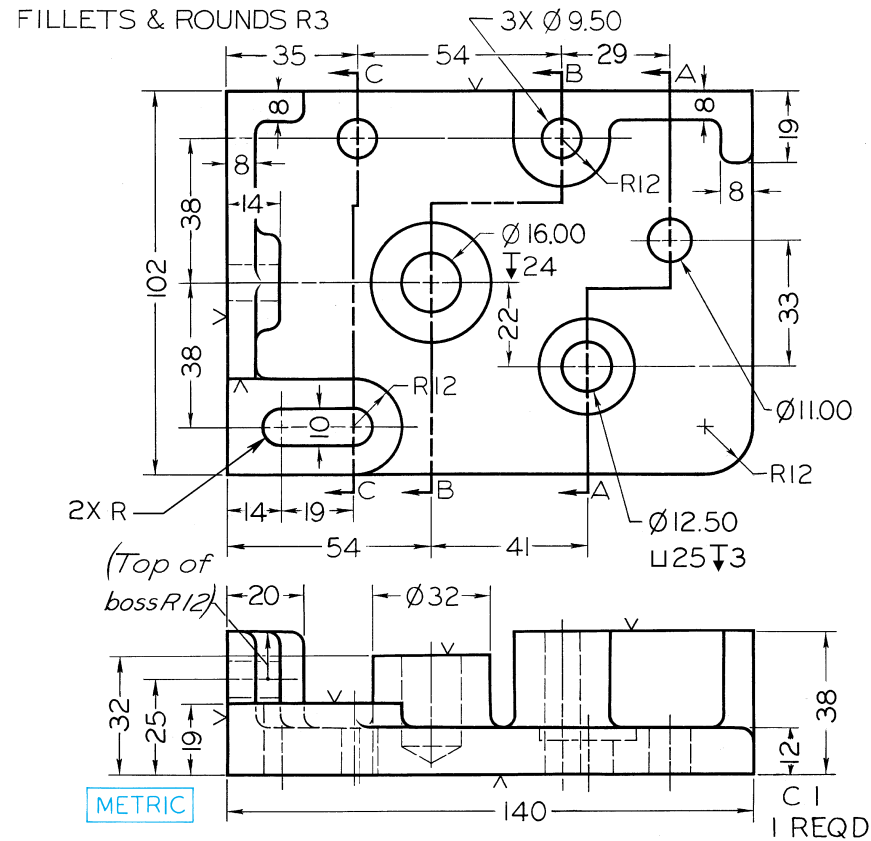


Figure 7-57

Adjuster Base. Given: Front and top views.

Required: Front and top views and sections A-A, B-B, and C-C.

Show all visible lines (Layout B-4).*

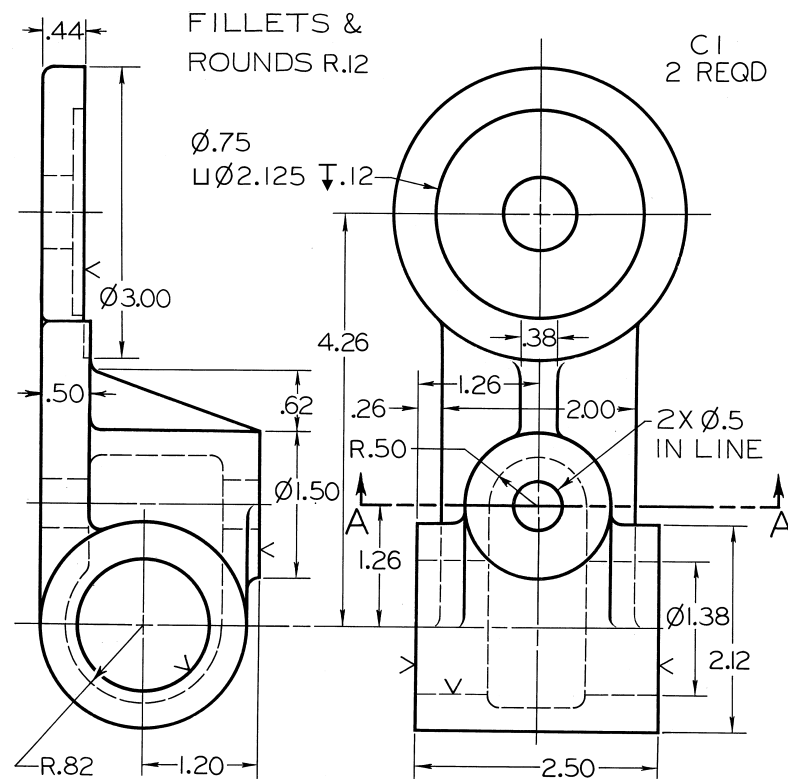


Figure 7-58

Mobile Housing. Given: Front and left-side views.
 Required: Front view, right-side view in full section,
 and removed section A-A (Layout B-4).*

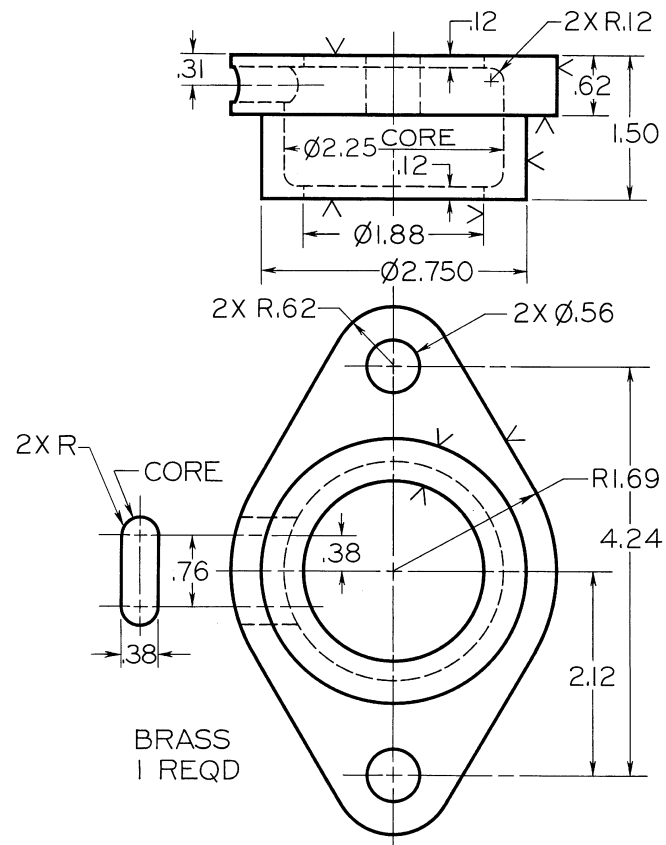


Figure 7-62

Gland. Given: Front, top, and partial left-side views.
Required: Front view and right-side view in full section
(Layout A-3 or A4-3 adjusted).*

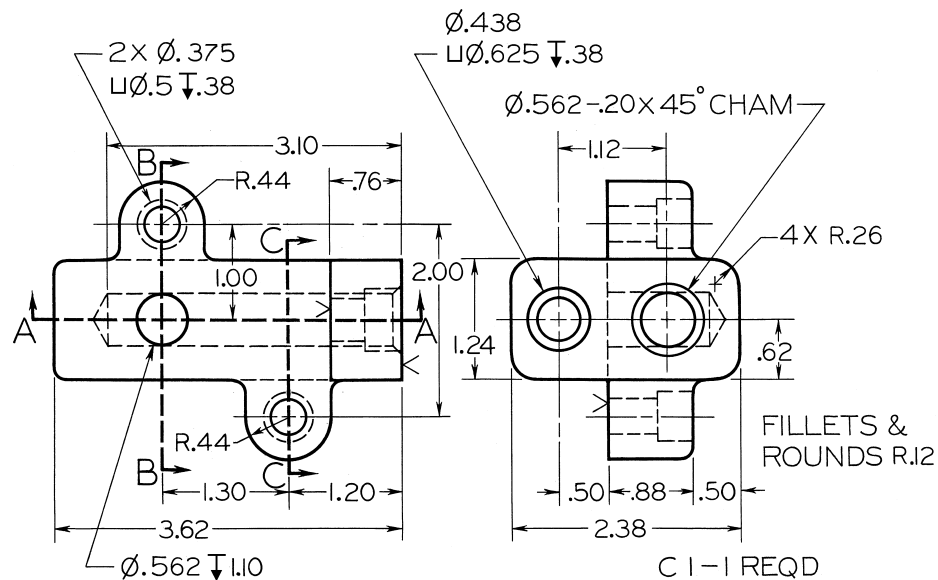


Figure 7-63

Bracket. Given: Front and right-side views.

Required: Take front as new top; then add right-side view, front view in full section A-A, and sections B-B and C-C (Layout B-4 or A3-4 adjusted).*



Required: Front and top views and right-side view in full section (Layout C-4 or A2-4).*

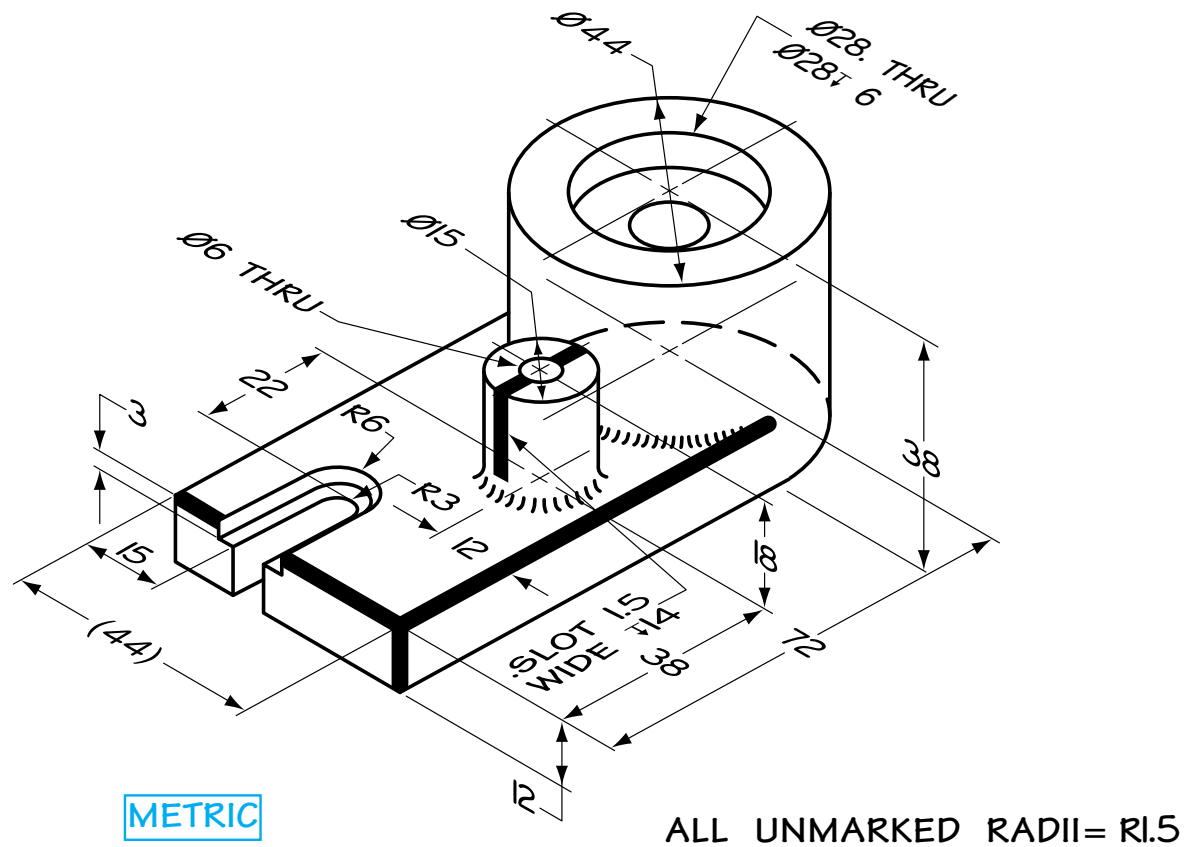


Figure 7-71

Transmission Part. Draw necessary views with full section.

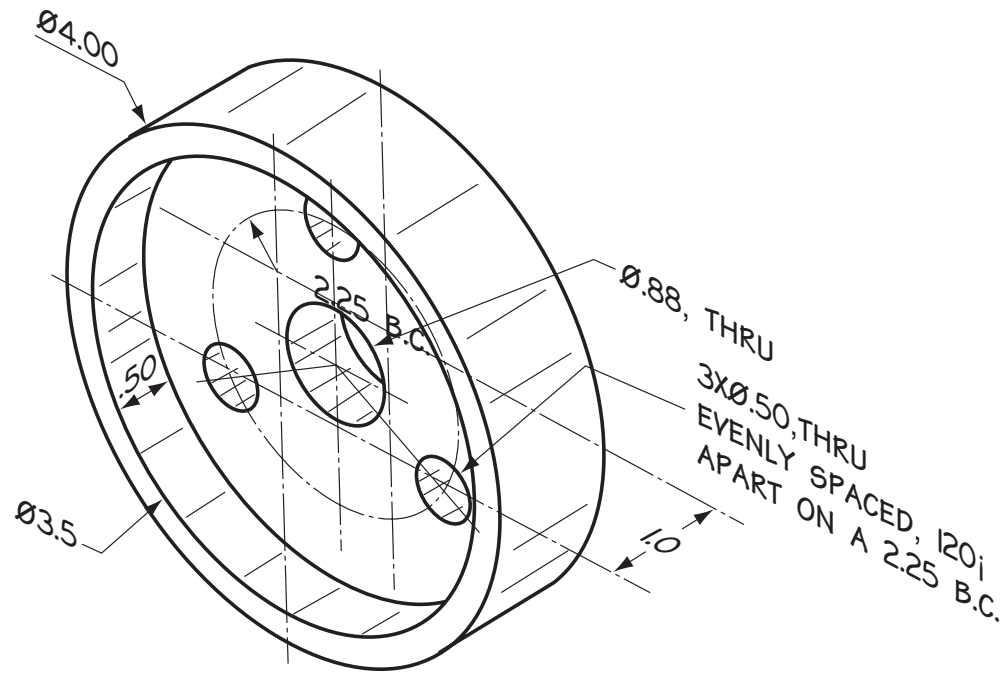


Figure 7-74

Plastic Spacer. Draw all necessary views with one half section (Layout A-3).*

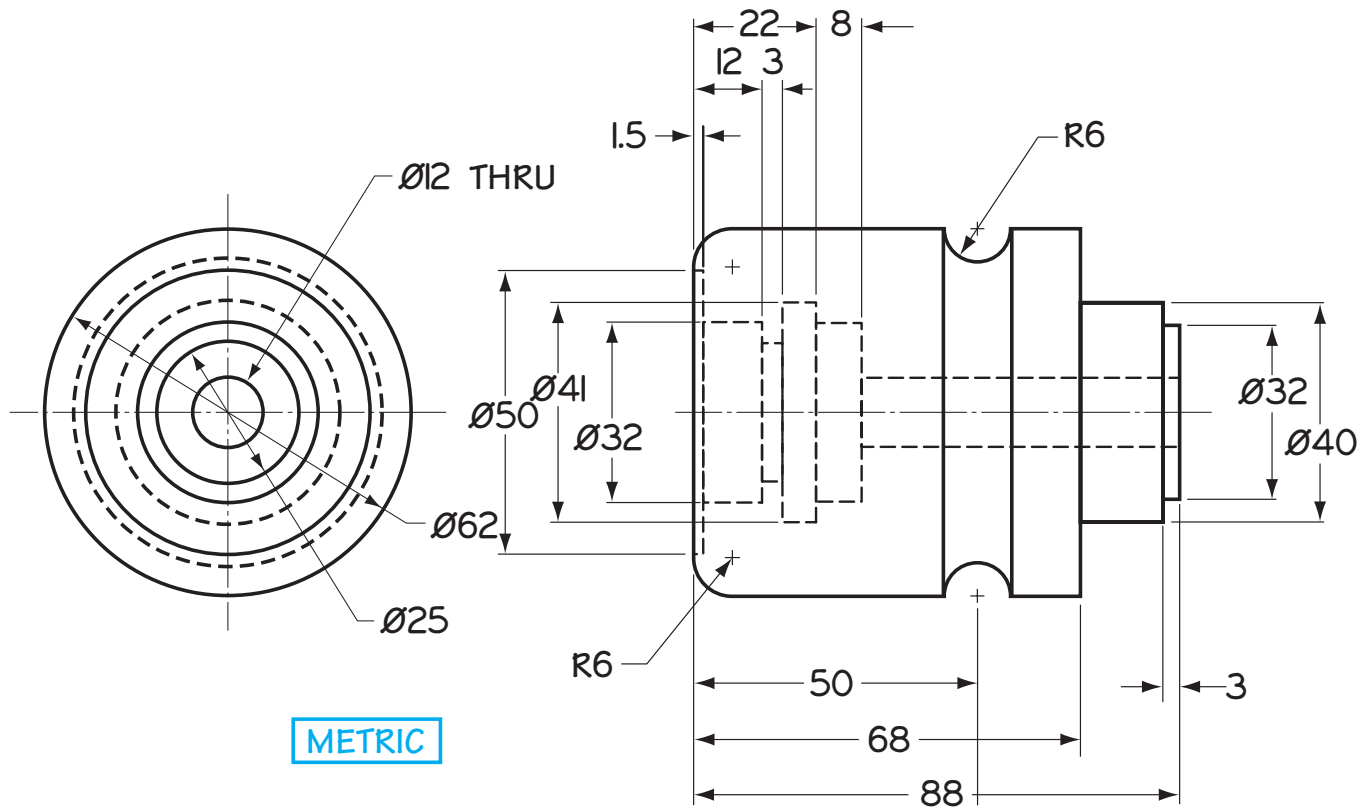


Figure 7-75

Motor: Draw all required views with one half section (Layout B-4 or A3-4 adjusted)

